



Volume 1
Issue 1

Thursday, February 27, 2003

Winds of Change

Koi Aquaculture and Renewable Power Project Newsletter

KARP Related News:

The mid-year report is done. If you would like a copy of it please call the KARP office at (360)538-4212, or E-mail your request to:

mkoster@ghc.ctc.edu

Renewable Energy Presentation is scheduled for February 21, 2003. If you would like to attend this event then let us know. We would love to have you there. The presentation shall take place in the ASGHC Conference room located in the hub at 2:00 pm.

The KARP project loves it's ROPES Courses, and we have another one planned for Valentine's Day., at Evergreen State College. We will leave here at 8:00 am.

Where we were...

When the KARP Project was created two years ago members formed a unique mission statement that has become a constant reminder to those who work on the project of where we have been and where the focus of our project shall always reside. That mission statement is:

"The Karp project exists to develop and apply state-of-the-art technologies to meaningfully advance learning, awareness, service, aquaculture, and energy use that is well aligned to lifestyles compatible with our earth's capacity to sustain us, and to do this with a sense of urgency."

Although, we have not faltered on our mission, we have adapted our vision for the project in several key areas.

One area is our original vision for our Koi Hatchery. At first we were going to house the tanks in a cleaned line structure with architectural emphasis being on the actual rearing of the fish. However, with the help of architect Alan



The Watershed area as it looks today

Goart, the hatchery has been transformed into a structure that still has clean lines, but those lines shall now complement the architecture of the Bishop Center. New aspects of the building will include an open area that will feature natural day-lighting, as well as more space for informational and interpretative displays. This new vision for our project will have the building's prime focus shifted from the day-to-day rearing of the koi, to that of an educational natural resources learning center. This Center shall be the highlight to the accom-

(Continued on page 2)

The Many Faces of KARP



#1



#2



#3

Pictures 1 and 3 are from our last ROPES Course, and picture 2 is from one of our seminars. Working and learning together is what keeps this team strong.



Koi Aquaculture and Renewable Power Project

1620 Edward P. Smith Dr. Room 322A
Aberdeen, WA 98520

Phone: 360-538-4212

Email: mkoster@ghc.ctc.edu

KARPe Diem: Seize the Day, Secure the Future

WE'RE ON THE WEB!
<http://www.ghc.ctc.edu/karp>

...and where we are now. Our New Vision

plishments and mission of the KARP and Model Watershed Projects.

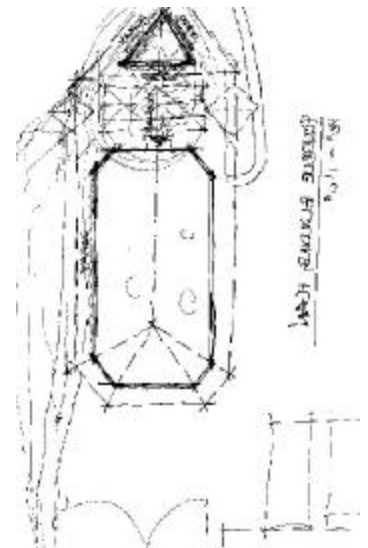
Another expansion of our original mission has been to promote ourselves to public and private organizations with the aspiration to create life-long partnerships in the alternative energy, education, and aquaculture fields.

We have merged onto the path of success in this endeavor by doing such things as creating a brochure to familiarize individuals with our project, and of course this newsletter. We hope that this will keep our continuing partners aware of our many achievements. We have also started to take our Power-Point Presentations out onto the road (so to speak), not only for informational and educational purposes, but also as a valuable learning tool for our staff.

We feel that this new directive for our mission is one in which will eventually lead to the environmental, and educational showcase we hope our project shall one day become.

If you have any feedback on our efforts, or information you would like to share with us please contact us any time. Your help and support will always be greatly appreciated.?

More updates to current projects, and formal drawings of the center to be included in upcoming newsletters. Our newsletter shall come out on a monthly basis.



A more up-to-date version, which will complement the looks of the Bishop Center.